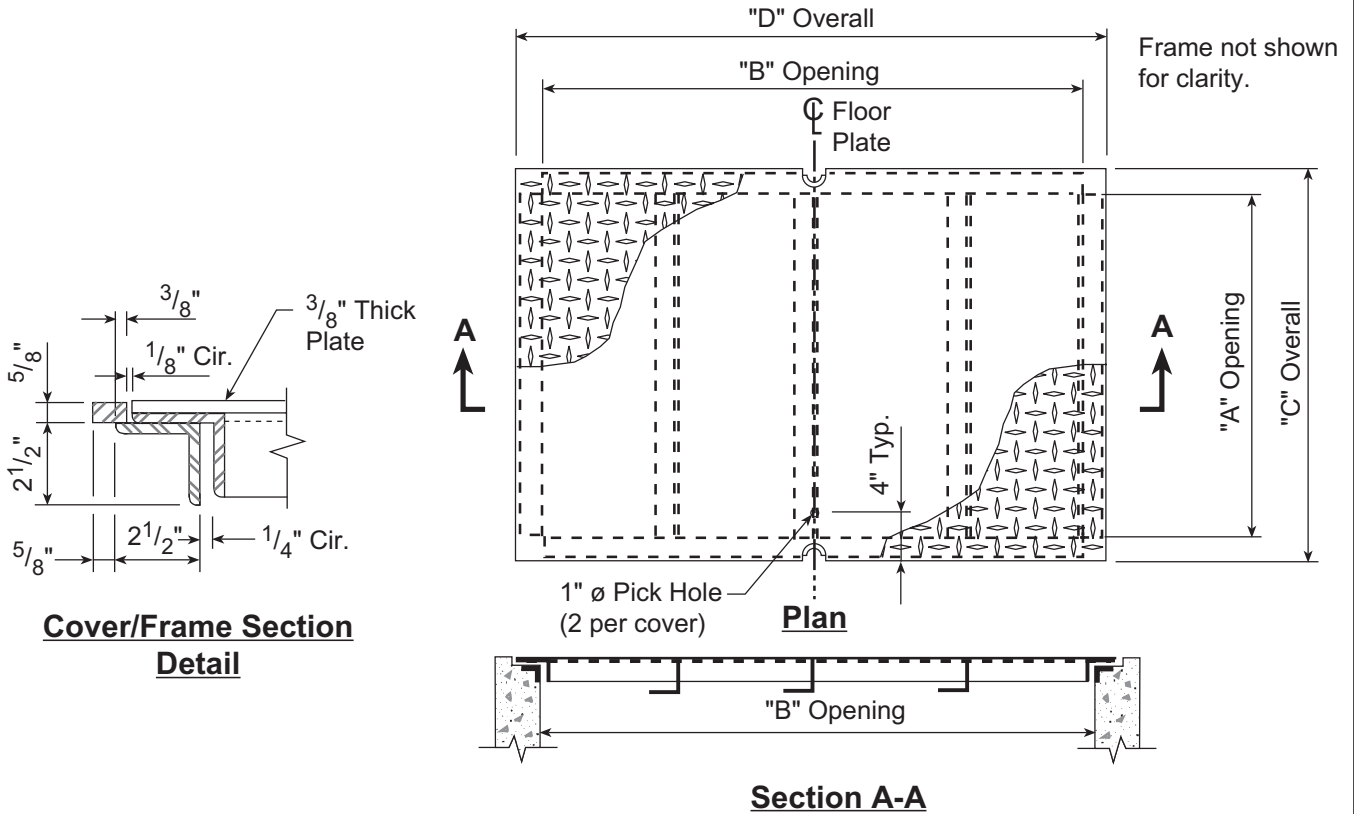


# Precast Electrical Manholes



## Specification:

The one-piece frame and cover provided by Forterra shall have a heavy duty prime painted A-36 steel door panel with a 2 1/2" x 2 1/2" x 1/4" angle continuous bearing seat.

Steel door panel shall be diamond plate designed to withstand AASHTO HS-20-44 highway loading.

Each panel shall have (2) 5/8" slots to accept a 2 - 1/2" diameter x 2" long recessed steel bolt and (2) 1" dia. pick holes.

## Standard Features:

- HS-20-44 Highway load rating.
- Lockable (bolt-down) recessed hardware.
- Diamond plate slip resistant cover.
- 1" diameter pick holes for lifting.
- Bead welded lettering as required.


## Optional Features:

- 1/2" diameter recessed drop handle.
- Hinged doors.
- Penta head bolts.
- Galvanizing.

## Standard Covers:

Size (in.)	Dimensions (in.)				Unit Wt.
	A	B	C	D	
16 x 24	16	24	20	28	
18 x 18	18	18	22	22	
24 x 24	24	24	28	28	
24 x 36	24	36	28	40	
36 x 36	36	36	40	40	

**-No Scale-**  
All dimensions subject to allowable specification tolerances.

TITLE	SECTION.PAGE	DATE	
<b>1-Piece Cover HS-20-44 Highway Loading (T-1 Series)</b>	2.17	10/20/10	