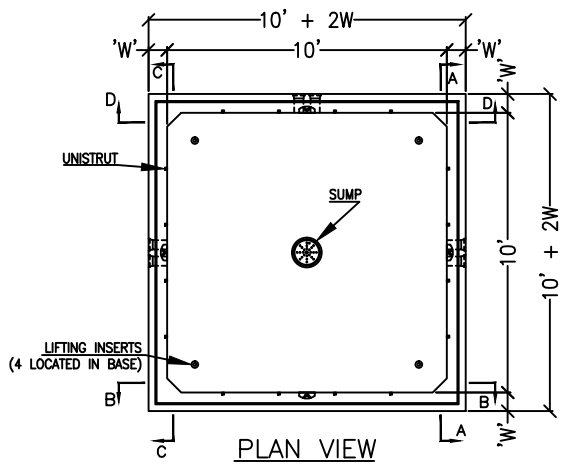


SECTION A-A

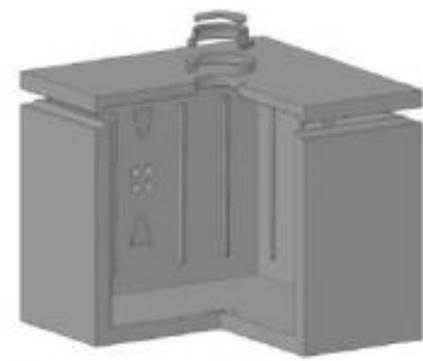
SECTION B-B

SECTION C-C

SECTION D-D



PLAN VIEW



ISOMETRIC VIEW

GENERAL NOTES:
 - CONCRETE: 5,000 PSI
 - REINFORCING: GRADE 60 REBAR OR WWF EQUIVALENT
 - BUILT TO WITHSTAND AASHTO HS-20 TRAFFIC LOADING

WEIGHTS (BASED ON B=8", W=8", C=8", & H=8'):

- BASE AND WALLS: 47,600 LBS
- COVER: 12,850 LBS

COMPONENTS:
 - COVER: LABELED "ELECTRIC" OR "TELE-COMM"
 - TERMINATORS: PENNSYLVANIA INSERT CORP.
 - SUMP: PENNSYLVANIA INSERT CORP.
 - PULLING IRONS: PENNSYLVANIA INSERT CORP.
 - JOINT SEAL: "RUB'R-NEK" BUTYL RUBBER SEAL BY K.T. SNYDER COMPANY
 - LIFTING INSERTS: "SWIFT-LIFT" BY DAYTON SUPERIOR OR "A" ANCHORS BY CONAC
 - CABLE RACKING: UNISTRUT BY CONCRETE INSERTS

FORTERRA™
 www.forterrastructuralandspecialty.com

10'-0" X 10'-0" UTILITY MANHOLE (for HS20 LIVE LOADS)

DRAWING NO.	
10' X 10' MH	
DATE 5/24/16	
SCALE	
DR. MBO	CH.